

Dodeca

Spreadsheet Management System

8

Ready to make the *shift*?

*Accelerate
into the
fast lane with
Dodeca 8*



APPLIEDOLAP

We make Essbase better



Dodeca[®]

Spreadsheet Management System

Business process automation for planning, reporting, and analysis.

Why change your business processes to fit a software package?

Dodeca provides the flexibility to build applications that fit the needs of your business without being forced to compromise requirements.

Dodeca is used for many types of applications, including:

- Financial Reporting
- Revenue and Expense Planning
- Workflow Planning
- Capital Planning
- Merchandise Planning
- Cash Flow Analysis
- Regulatory Reporting
- Variance Analysis
- Sales Analysis
- Labor Reporting
- Forecasting
- Annual Budgets



Dodeca is Better

Dodeca customers are highly satisfied across all aspects of the Dodeca experience from end-user productivity to cost savings. Among the many benefits, a few of the results reported by customers include:

- ▶ Savings of over 13,000 hours per year, cutting the time in half to create management reports
- ▶ Saving an estimated \$200,000,000 over three years using Dodeca to enable a cost cutting effort
- ▶ Simplified model complexity used for revenue recognition while adding control and consistency

Dodeca customers rave about the exceptional technical support which is a significant factor in helping them reach their goals.

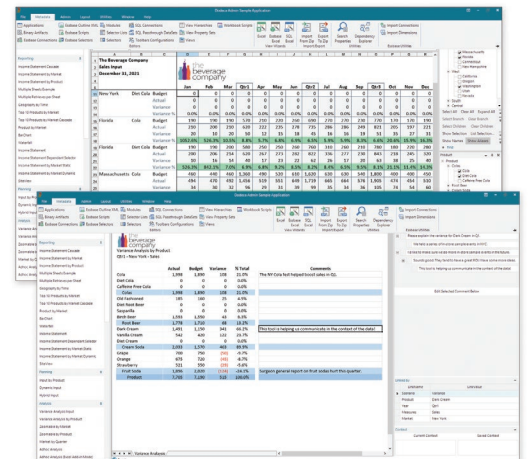
Dodeca is Different

Dodeca uses the Excel file format as a template to build reports consistently, dynamically, and automatically, using Oracle Essbase, Oracle Database, Microsoft SQL Server, IBM DB2, and other corporate databases. Dodeca manages Excel templates centrally in a secure server to deliver up-to-date finished reports to end-users using patented technology. Automate sophisticated business processes to make seemingly impossible tasks easy with little to no user training.

Dodeca Does It—*faster!*

Companies adopt the many features of Dodeca to run mission critical spreadsheet applications:

- ✓ Fast and easy read/write-back with Essbase and SQL data sources
- ✓ Commentary to gather, organize, and store variance analysis
- ✓ Drill-through to everywhere, including the transactional level
- ✓ Audit Logging to provide true accountability
- ✓ Access multiple data sources, including multiple Essbase cubes and relational data in a single report
- ✓ Configurable POVs
- ✓ High performance Essbase ad hoc capability
- ✓ Flexible, event-driven extensibility
- ✓ Multi-threading EssJet technology - multiple Essbase retrieves or sends at the same time



Dodeca 8—Built for SPEED.

New feature highlights

▶ **Concurrent Essbase Retrievals**

EssJet technology allows Dodeca to run multiple Essbase retrieves, or sends, at the same time. Dodeca can now simultaneously run multiple queries from a single sheet or from multiple sheets in a workbook, which greatly enhances performance.

▶ **Asynchronous Environment**

Allows most processes, including Essbase data and metadata queries, commentary queries, and startup functionalities, to run in the background freeing the user-interface for more interaction while providing the option to cancel processes.

▶ **Commentary**

Files can now be attached to comments in Dodeca. Significant improvements to commentary retrieval performance have been made.

▶ **Workbook Analyzer and Cleaner**

The Dodeca Workbook Analyzer can analyze and clean Excel workbooks. This gives an administrator the ability to clean old workbooks which often contain unnecessary artifacts such as dead Excel links, #REF range names, extraneous styles, and unused Smart View data streams.

▶ **EPM Cloud Connector**

Introducing Oracle Planning Budget Cloud integration.

▶ **HFM Connector**

Dodeca can retrieve data from Hyperion Financial Management databases allowing integration with Essbase and Relational data.

▶ **Essbase member search enhancements**

Full wildcard searches of an Essbase member or alias are now supported, a unique feature among Essbase reporting tools.

▶ **Expandable shared member hierarchies**

Shared members can be expanded in the Treeview Selector to show the descendants of the base member.

▶ **Single Sign-On (SSO) Support**

Dodeca supports Single Sign-On using the SAML2 protocol, including the option for Multi-Factor Authentication, provided by Identification Providers such as Okta, Ping, and JumpCloud.

.....

To learn how the Dodeca Spreadsheet Management System can help your company, contact us at 256.885.4371 or dodeca@appliedolap.com

Seeing is Believing

Take the Dodeca Challenge

We are so confident that your company will see the value of Dodeca that we created *"The Dodeca Challenge"*.

This program provides your company free full use

Dodeca licenses for up to 6 months,
including support.

Take the challenge and join the growing number
of satisfied Dodeca customers.

Experience the time & cost savings for yourself.
What will be *your* Dodeca Savings Time (DST)?

To learn how the Dodeca Spreadsheet Management System,
the Dodeca Excel Add-In for Essbase and Drillbridge can
help your company, contact us at **256.885.4371**

or dodeca@appliedolap.com

appliedolap.com



APPLIED OLAP

Dodeca Spreadsheet Management System • Dodeca Excel Add-In for Essbase • Drillbridge

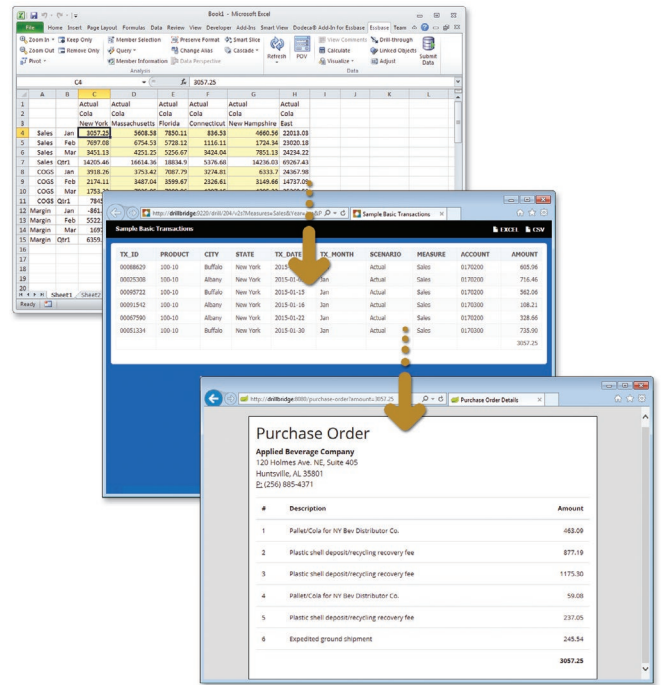




Drill-through Solution for Essbase, PBCS/EPM Cloud, Financial Reporting, and Smart View

Drillbridge is an innovative turn-key solution for easily providing drill-through to Oracle EPM Cloud, Hyperion Planning, Financial Reporting, and Smart View users. Drillbridge provides rich functionality for mapping from your Essbase dimensionality to the corresponding relational/transactional data and does not require changes to your automation or administration procedures.

- ✓ Drill to any combination of Oracle, SQL Server, and other relational databases
- ✓ Add multiple drill reports to a cell intersection
- ✓ For Essbase, PBCS/EPM Cloud, Financial Reporting, and Smart View
- ✓ No changes to cube automation or administration procedures
- ✓ Drill between different drill-through reports
- ✓ Quickly download output to Excel or CSV



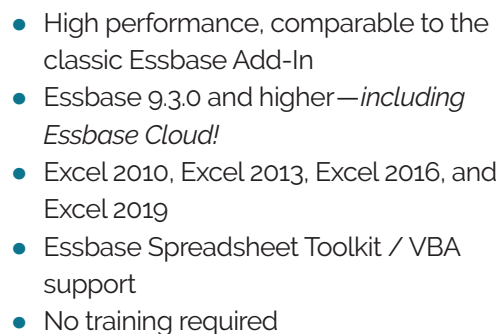
Drillbridge Features

- Drill through from Smart View
- Drill through from PBCS/EPM Cloud
- Drill through from Hyperion Planning
- Drill through from Financial Reporting
- Drill through from Essbase
- Support for third-party databases via JDBC
- SQL Query report type
- Forwarding link report
- MDX report
- Custom report plugins
- Result caching/paging
- Excluded members
- Prompt for relational database password
- Token editor GUI
- Drill from PBCS to on-prem relational database
- Enhanced report formatting options
- Overflow support

To learn how Drillbridge can help your company, contact us at 256.885.4371 or email info@appliedolap.com

The Drop-in Replacement for the Classic Essbase Add-In

The Dodeca Add-In provides powerful Essbase-centric ad hoc capabilities. By leveraging the state of the art technology developed for our flagship product, the Dodeca Spreadsheet Management System, Applied OLAP continues to evolve the next generation of the classic Essbase Add-In.



- ✓ Ad-hoc Essbase Operations
- ✓ Options at Your Fingertips
- ✓ Undo and Redo
- ✓ Unknown Members
- ✓ Status at a Glance
- ✓ Essbase Calculations with Run Time Substitution Variables
- ✓ Calculation Status
- ✓ Drop and go VBA Support

The Next Generation of a Classic

appliedolap.com | We make Essbase better



Applied OLAP Content at Kscope22

The Dodeca Symposium

Sun., June 19, 1:00 PM – 5:00 PM | Room: Texas 3

Presenter: Tim Tow, Founder and President - *Applied OLAP, Inc.*

The Dodeca Symposium is packed with tips and tricks, technical product information, and real-world case studies presented by Dodeca Spreadsheet Management System customers. Dodeca Version 8 introduced EssJet technology as well as other game changing features. The Applied OLAP team will share insider information about recently introduced features, and details of the short and long term Dodeca roadmap. This is also a great opportunity to ask questions and to give us your feedback.

Dodeca Spreadsheet Management System customers are eager to share how they are saving significant time creating innovative spreadsheet solutions. Easily replicated applications reduce cost and risk. Several of our well-known customers will share case studies during the session and will be glad to answer questions about their experiences.

This symposium will benefit you whether you are an existing customer or just wondering why our customers are so enthusiastic about their successful implementations.

Participation from *The Kroger Co.*, *Deckers Brands*, and *LexisNexis*

Rolling Out Dodeca at Deckers Brands. A View from the Boots on the Ground.

Mon., June 20, 2:15 PM – 3:15 PM | Room: Dallas 7

Presenter: Rich Wallach, Business Systems Analyst – *Deckers Outdoor Corporation*

Co-presenter: Tim German, Director - *Qubix*

Get a first-hand account of a successful Dodeca rollout at Deckers Brands, makers of the footwear Teva, Ugg, and Hoka. The Finance team's reception of Dodeca was hugely enthusiastic due to the value proposition baked into Dodeca with Essbase: its ease of use, support for secondary navigation, drill-through, and commentary. Together, these elements not only allowed users to quickly retrieve the reports they need, but made those reports interactive and provided a highly efficient way to answer the questions raised by the numbers. Using Dodeca commentary, analysis of financial results could then be immediately shared across the organization. In this session, we will look at examples of each component and detail Deckers' use of Dodeca as a reporting, budgeting, and forecasting tool for both the GL and employee-level salary planning.

Practical Guide to the Essbase REST API

Mon., June 20, 4:15 PM – 5:15 PM | Room: Texas 4

Presenter: Jason Jones, Chief Security Officer & VP Engineering – *Applied OLAP, Inc.*

Oracle's latest versions of Essbase offer a new and modern REST API that opens up many development, integration, and automation capabilities for any modern programming language. This practical session will introduce the REST API, exploring how it's similar to and different from traditional APIs. We'll also cover some real-world examples and how to get started with development.

Applied OLAP Content at Kscope22

Dodeca Customer Panel – Customers Talk About Saving Time and Money

Tues., June 21, 10:15 AM – 11:15 AM | Room: Texas 3

Presenter: Tim Tow, Founder and President - *Applied OLAP, Inc.*

Customer Panel: Elizabeth Ferrell - *The Kroger Company*, Victor Turner - *LexisNexis*,

Richard Wallach - *Deckers Brands*, Thomas Huelsman - *Belcan*

Dodeca is used by a wide range of large and small companies where deployment sizes range from ten to more than 25,000 users. Despite this diversity, a theme we consistently hear is how our customers use Dodeca to increase productivity and decrease the effort required to get accurate data from their corporate finance system.

Our customers love to share their experiences with Dodeca. Deckers Brands will present their journey to deploy a new Dodeca planning system. The Kroger Company will explain how they have continued to find new uses for Dodeca during the past decade. LexisNexis will discuss how they save 280 workdays each quarter.

During this interactive session, customers will describe how they standardized Excel spreadsheets and solved their challenging planning, reporting, and analysis issues while reducing their risk of errors using Dodeca.

How Kroger Used Essbase to Adapt Retail in Times of COVID

Tues., June 21, 11:45 AM – 12:45 PM | Room: Texas 3

Presenter: Elizabeth Ferrell, Financial and Reporting Systems Director - *The Kroger Co.*

In this retrospective of the last two-and-a-half years of reporting and analytics requirements for the retail industry we will discuss the advantages Kroger found by leveraging its extensive Essbase environments for short-term reporting visibility right at the beginning of COVID, then how it changed our reporting and forecasting in the interim, and, lastly, the lasting effects on our reporting left by the achievements we made into greater visibility. Kroger uses Oracle Cloud for the GL and twenty-nine other cloud tools but Essbase and Dodeca for reporting, budgeting, and forecasting. The teams running the EPM environments and reporting led the way in showing the business what was possible even before the business knew what it might need. Consider at the onset how year-over-year-driven projections became useless to a grocer, how supply chain drives availability, and how the responsibility of the grocer shifted from that of convenience to a lifeline in the community for necessary food and pharmaceuticals. The Oracle and Dodeca suite of tools went from a best-in-class analytics and predictive tool set to being the backbone of the lifeline in communities. The associates working in this industry have a whole new level of pride of ownership driven from the valuable and flexible toolset that allows their ingenuity to shine.

Run Your Own Essbase 21c Server with Docker

Wed., June 22, 3:30 PM – 4:30 PM | Room: Texas 4

Presenter: Jason Jones, Chief Security Officer & VP Engineering – *Applied OLAP, Inc.*

Docker is a modern technology for rapidly deploying and 'containerizing' servers both on-premises and in the cloud. This presentation will introduce the Docker technology in a practical way, focused specifically on how to use it to quickly run an Essbase 21c server on your own machine to use for development, testing, and more.